

Arun Valley

What's been achieved – what's to do?

Andrew Spiers
Senior Commercial Scheme Sponsor

South East Route Devolution?

South East route

South East: delivering a safe, reliable and efficient railway; a railway of which we can be proud.

3,200 EMPLOYEES

2,000 TRACK MILES

537 LEVEL CROSSINGS

361 STATIONS

3,129 BRIDGES

85 TUNNELS

South East Route – Control Period 5

CP5

£1.5
bn

CAPEX
(Renewals)

£1.2
bn

OPEX

DID YOU KNOW?

Network Rail operates in **five-year long Control Periods**. We are set targets and allocated funding for these periods by the **Department for Transport (DfT)** and Transport Scotland. From this we develop detailed plans for how we will achieve these targets. The **Office of Rail Regulation** assesses these plans to confirm the funding required. We entered **CP5** in **April 2014**, which will run until **March 2019**.

South East Route - demand

In Sussex, total passenger numbers grew 40 per cent in the last decade, with four in every five people travelling from Sussex to London taking the train.

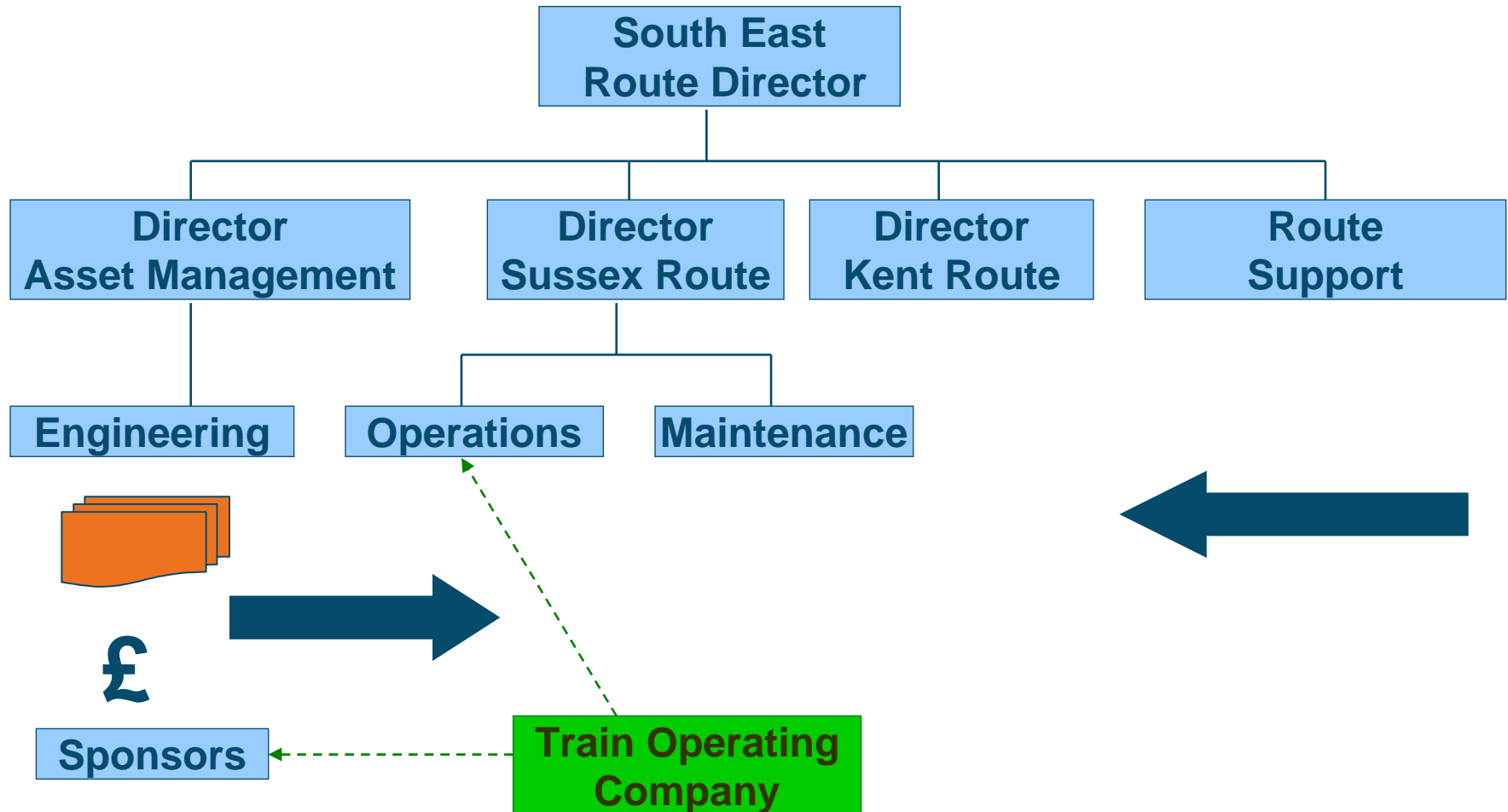
This growth is set to continue, with peak demand forecast to increase across the new Route by 20 per cent in the next ten years.

DID YOU KNOW?

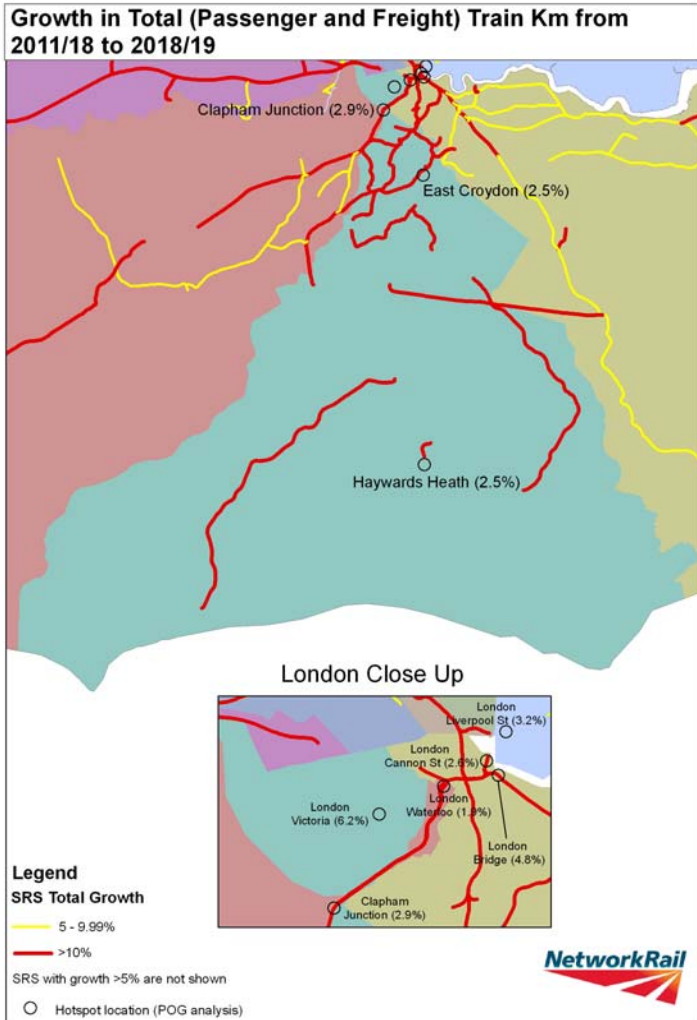
Victoria, London Bridge and Charing Cross are three of the five **busiest** stations nationwide; more passengers use Victoria each year than use Heathrow Airport.



Devolution – South East Route



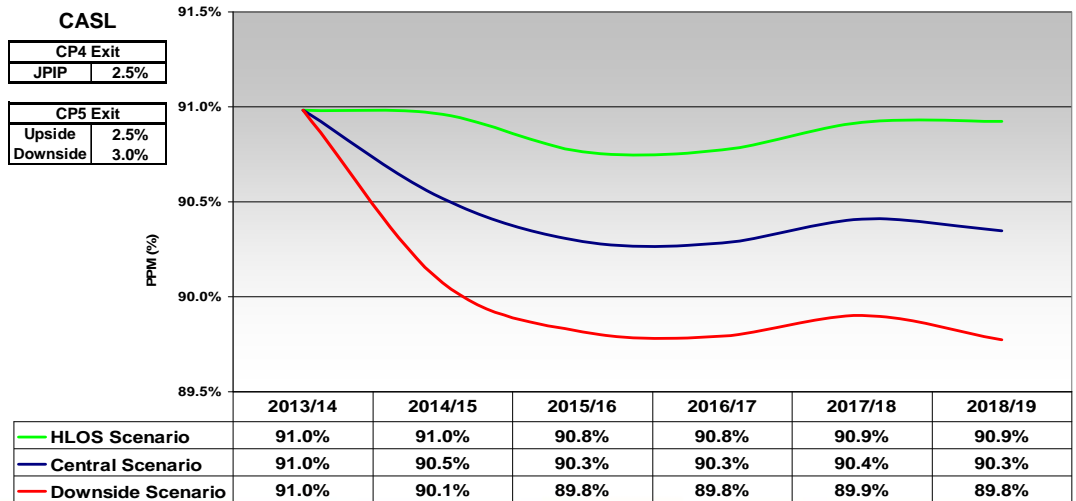
CP5: Performance and growth



- Passenger growth of 40 per cent in the last 10 years and forecast to grow by a further 30 per cent in the next 10 years.
- We will focus maintenance on key hot spots as heavy renewals will be limited during Thameslink KO2 work. Thameslink KO2 is likely to have a negative impact on Southern PPM.
- We will continue to address all causes of delay, and service recovery, working with our industry partners.
- Gatwick re-modelling and Arun valley re-signalling benefits will be realised in 2014/15.

Southern

Predicted CP5 PPM Range by Year



Arun Valley 1 – Project delivery

New signalling

- ▶ Closure of signal boxes at Billingshurst, Pulborough and Amberley

Level crossings

- ▶ Upgrade of User Worked Crossings at Hadfold and Vale wood
- ▶ Improvement works at Billingshurst LX

Improving capacity

- ▶ Headway improvements (more trains on same section of line)
- ▶ Linespeed increase (faster trains)

Amberley signal box



Billingshurst signal box



Billingshurst – LX technology



Level Crossings – new technology



Level crossings

Fishbourne – temporary closure and footbridge

Yapton – PSR for train services (performance problem)

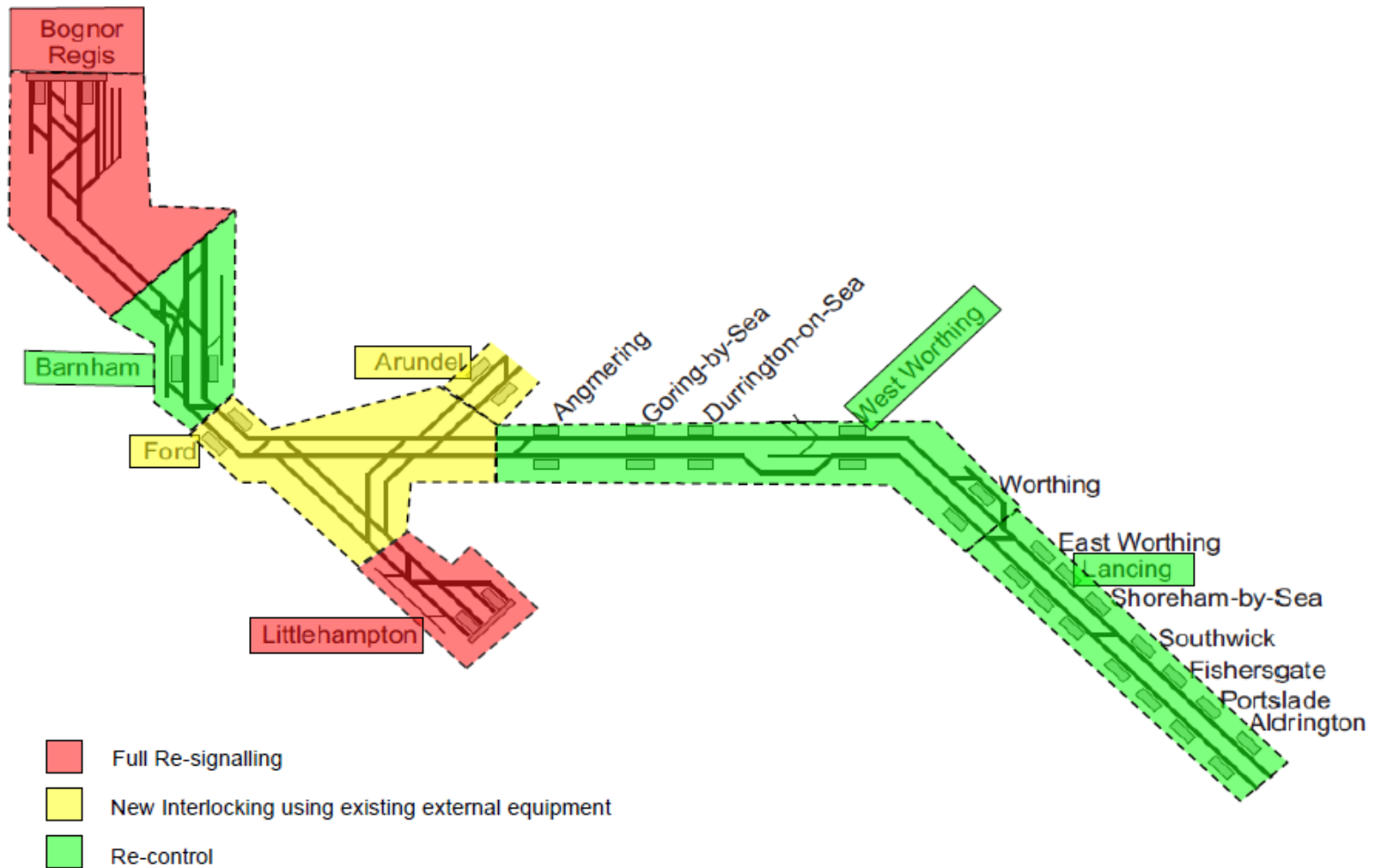
Lyminster & Toddington FP crossings – relief road to be constructed

Woodgate crossing – road bridge at early planning stages

Level crossings - Yapton



Arun Valley 2



Arun Valley 2 - Opportunities

Removal of restrictions

- ▶ PSRs
- ▶ Better depot working

Improved performance

- ▶ New assets
- ▶ Remote monitoring

Review of all level crossings

- ▶ Level crossings census and risk assessments

Arun Valley – other works

Structures and permanent way

Removal of PSRs;

- ▶ Thorndell trestle bridge
- ▶ Pulborough viaduct

Gatwick airport

- ▶ Additional capacity performance

West Coastway service improvements

- ▶ Southampton - Brighton

Thank you for listening ...

Platform 7 lift at Gatwick

3 Br platform works

Christ's Hospital Downs link footpath across station

Christ's hospital underpass flooding -

Any questions ?